

# Effect of Increasing Power Factor in Industries

Mohamed Osman Widaa Osman<sup>1</sup> and Dr. Muawia Mohammed Ahmed<sup>2</sup>

<sup>1</sup>Control Engineering Department, El-Neelain University, Khartoum, Sudan  
*mowidaa118@yahoo.com*

<sup>2</sup>ASSOC Professor, College of Engineering, El-Neelain University, Khartoum, Sudan  
*muawia15858@hotmail.com*

Publishing Date: March 16, 2017

## Abstract

There are number of motors working in industries which are inductive nature so they draw inductive current due to that inductive current power factor goes decreases than specified limit (0.95-1%). If the power factor reduces than this limit then industries get penalty charges and also increase losses or cost. So that this project (paper) is designed to minimize these penalty charges and reduce the losses, also cost, and save power by increasing power factor. This is done by Automatic Power factor Correction Technique using microcontroller. Power factor can be defined as ratio of real power to apparent power. Real power is useful power and also said active power. Reactive power is the non-working power which is generated by magnetic and inductive load to generate magnetic flux. Apparent power is the addition of active and reactive power.

**Keywords:** Automatic of Power Factor Correction, Apparent Power, Microcontroller, ZCD, Capacitive Bank, Inductive Load.

## 1. Introduction

Majority of the loads in the industries are highly inductive in nature such as induction motors, AC/DC drives, welding machines, arc furnaces, fluorescent Lightings, electronic controls and computers.

There may be a few resistive loads for heaters and incandescent bulbs. Very rarely industries may have capacitive loads such as synchronous motors [3]. This type of loads draws inductive current. Due to this inductive current power factor decreases. For a load with a low power factor more current required compared with a load with high power factor for the same amount of useful power transferred. If more current is drawn by the load, it affects different factors such as increasing losses, increases cost [1].

Low power factor is usually not that much of a problem in residential homes. It does however become a problem in industry where multiple large motors are used. So there is a requirement to correct the power factor in industries. Generally the power factor correction capacitors are used to correct this problem [4].

## 2. Disadvantage of Low Power Factors

- 1) Reduces the KVA capacity of the electrical equipment like transformer.
- 2) Increases losses.
- 3) Voltage level at load end is reduced (poor voltage regulation).
- 4) Deteriorates the performance of the motors, generator and transformer (reduce the efficiency of motor, transformer; reduce illumination of incandescent lamp etc.).
- 5) Increases the thermal stresses into the electrical equipment.
- 6) Reduces the useful life of equipment.
- 7) Increase the power factor penalty and maximum demand charges.
- 8) Increases the size of conductors, circuit breakers, alternators etc.

Power factor improvement is hence necessary to overcome the various power losses and enhance the performance of the electrical equipment [5].

## 3. Source / Cause of Low Power Factor

There are many causes of low power factor. Major are:

- 1) Induction motors

- 2) Transformer.
- 3) Arc furnace.
- 4) EM ballast.
- 5) Arc welders.
- 6) Alternator.
- 7) Magnetic levitation.
- 8) Rewound motors may reduce the pf due to increase in air-gap, change the materials and size of conductors etc.
- 9) Induction heating.
- 10) HPMV/HPSV Lamps.
- 11) Over rating of equipment: if the induction motor is oversized, than power factor is reduced because it runs at lower load than rated load.
- 12) Increase in system voltage: during off-peak period the load is decreased but system voltage is increased.

Hence due to this high voltage, magnetizing current in transformer, induction motor etc increase which leads to increase the KVAR and power factor is reduced [5].

#### 4. Benefit of Power Factor Correction

Main benefits of correcting the power factor are:

- 1) Reduce Utility Power Bills.
- 2) Increase System Capacity.
- 3) Improve System Operating Characteristics (Gain Voltage).
- 4) Improve System Operating Characteristics (Reduce Line Losses) [5].

#### 5. Type of Power Factor Correction

- Distributed PF correction.
- Group PF correction.
- Centralized PF correction.
- Combined PF correction.
- Automatic PF correction.

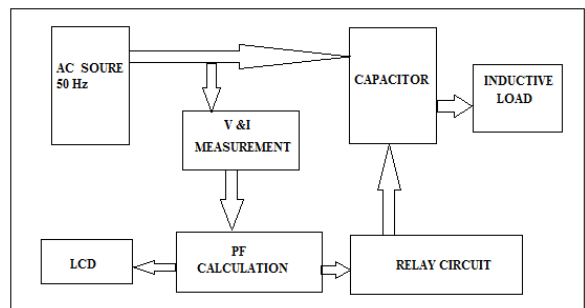
#### 6. Proposed Method

##### 6.1. Automatic Power Factor Correction

Automatic power factor correction device reads power factor from line voltage and line current by determining the delay in the arrival of the current signal with respect to voltage signal from the power supply with high accuracy by using an internal timer. This time values are then calibrated as phase angle and corresponding power factor. Then the microcontroller

calculates the compensation requirement and accordingly switches on different capacitor banks. Automatic power factor correction techniques can be applied to the industries to make them stable and due to that the system becomes stable and efficiency of the system increases. The use of microcontroller reduces the costs. [2].

#### 7. Block Diagram of Complete System



**Figure 1: Block diagram for Monitoring PFC**

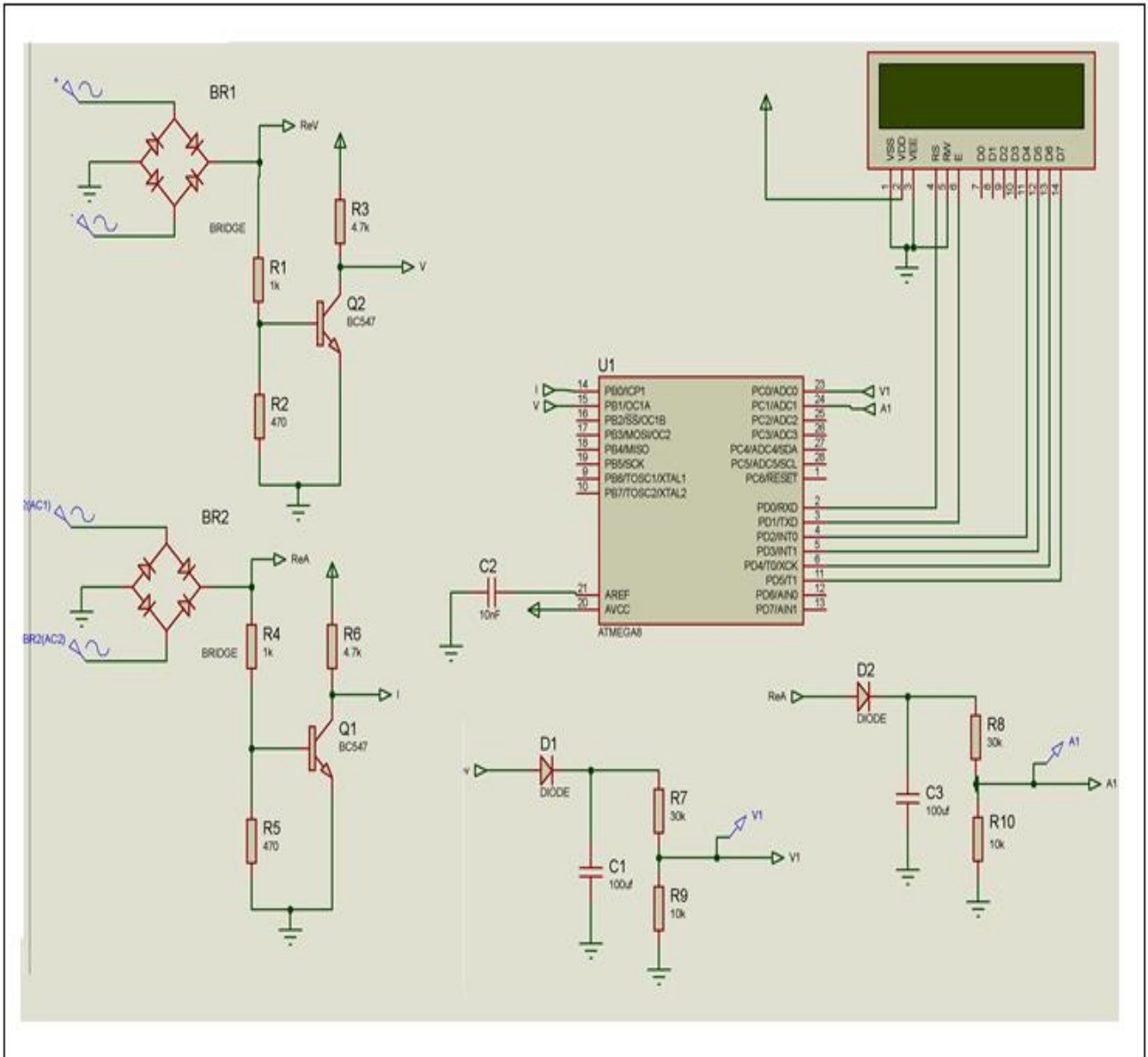
#### 8. Methodology

Block diagram of microcontroller based PFC is shown in fig1. Whole system may be divided into three stages. First stage is concern with the conversion of incoming voltage and current into the microcontroller level voltage (e.g. 5V). Here we have to use the step down arrangement like step down transformer. Second stage is concerned with zero crossing level detection for voltage and current, the incoming signals. Voltage signal can be acquired by the output of Potential Transformer for detection. Current signal can be acquired by using Current Transformer connected at main AC line. In third stage block diagram represents the Automatic power factor control with continuously load monitoring of the system. In this stage we calculate the phase angle between current and voltage that is continuously displayed on LCD.

The digital voltage and current signal so acquired are processed in the microcontroller with the help of appropriate algorithm realized in its software. The main part of the circuit is microcontroller (Atmega8) with crystal of 8MHz for power factor calculation, relay circuit, capacitor, voltage and current measurement unit, and inductive load. 50Hz Ac

supply is connected to the lamp and capacitor start induction motor. Current transformer and potential transformer are used to reduce current and voltage levels for zero crossing detectors. The zero crossing detects or is a device for detecting the point where the voltage crosses zero in either direction the measured voltage or current signal are given to RC0; RC1 pin of microcontroller . Microcontroller calculate the power

factor of measured values, depends upon Error it will send signal to relay .LCD display is used to display power factor value of the line continuously. When relay energized by microcontroller it connect capacitor parallel with load, when relay de energized it disconnect the capacitor from the line.



**Figure 2: Circuit Diagram of Power Factor Correction**

## 9. Results

The most important results obtained are summarized in table 1 below:

**Table 1: Significant Results**

Load	Old PF	Capacitor value (Kvr)	New PF
400 Watt	1	0	1
0.5 HP	0.78	0.309	0.9
1.0HP	0.57	0.687	0.9
1.5 HP	0.37	0.932	0.9

## 10. Conclusion

The most economical way of producing reactive power required by most electrical devices is by the use of capacitors. Installation of capacitor bank for power factor correction and monitoring by using Automatic power factor controller gives more accurate result than other methods. Thus we can conclude that from this system with increase in power factor we can save power and also efficiency can be increases and this system can be implemented in industries.

A reduction in the overall cost of electricity can be achieved by improving the power factor to a more economic level.

## 11. Future Work

The automatic power factor correction using microcontroller technique is very efficient as it reduces the cost by decreasing the power drawn from the supply. There is no anyone moving part, it operates automatically. So Automatic Power Factor Correction Technique can use in industries in future.

## References

[1] A. R. Yadav, S.S. Wagh mode, G. B. Gawade, S.S. Zinjade, P.T. Patil, (March 2016); "A Review on Microcontroller Based Automatic Power Factor Correction" Vol 5, Issue 3; International Journal of Advance Research in Electrical,

Electronic, and Instrumentation Engineering ((IJAREEIE)).

- [2] A. Mariya Chithra Mary, D. R. Benin Mano Raja, S. Sathish Kumar, M.Govinathan; (April 2015); "Microcontroller Based Automatic Power Factor Correction" Volume 4, Special Issue 4; International Journal of Innovative Research in Science, Engineering and Technology ((IJIRSET)).
- [3] Anant Kumar Tiwari, Durga Sharma, Vijay Kumar Sharma; (February 2014); "Automatic Power Factor Correction Using Capacitive Bank", Vol4, Issue 2, Version 1, pp 393-395; Int. Journal of Engineering Research and Application.
- [4] Nandish B.M.S. Gopalakrishna, Jiby C. Jose, (May 2014); "Power Factor Correction of 6.6 KV Distribution Line in LC11 RMHS Department, JSW STERK"; International Journal of Research in Engineering and Technology.
- [5] Kashyap L. Mokariya, Mihir Raval , Patel Snehal; (2013); "Automatic Power Factor Controller using Programmable Logic Controller (PLC)"; Vol 2, Issue 3; IJEA.